

## **SPCPro**

# **USER MANUAL**



# SPC*PRO* User's Guide

Copyright © 2006 Elcomponent Ltd

*All Rights Reserved.*

The information in this document is subject to change without notice.

Elcomponent Ltd has made every effort to ensure the accuracy of this manual. However, Elcomponent Ltd makes no warranties with respect to this documentation and disclaims any implied warranties of merchantability and fitness for a particular purpose. Elcomponent Ltd assumes no responsibility for any errors that may appear in this document.

## **Trademarks:**

IBM is a registered trademark of International Business Machines Corporation.

Windows is a trademark of Microsoft Corporation.

All other product names are copyright and may be trademarks and/or registered trademarks of their respective companies.

## **Symbols:**

The following symbols may be used in this manual



**WARNING:** Failure to follow the instructions may result in personal injury or damage to the instrument.

## **PC Specification:**

The *SPCPro* has a large memory capacity and also utilises Bluetooth as its communication and data transfer protocol. This requires a PC of the following minimum specification to make best use of the product's capabilities.

<b>Windows:</b>	Vista or XP Pro
<b>Processor:</b>	Pentium 4 or Centrino mobile 2.0 GHz+
<b>RAM:</b>	256MB+
<b>Display:</b>	32 bit colour 1024 x 768 minimum
<b>USB:</b>	

A lower spec PC may provide satisfactory performance, but the graphing capability, particularly with larger surveys will be slower. Download speed is dependant on the USB port spec.

## INTRODUCTION

The **SPCPro** and its dedicated PC software package 'PowerPackPro' combine new technology and years of experience into an unbeatable low-cost package.

It is the latest development of the well-proven "3 currents, 1 voltage" design, which allows accurate 3 phase power and energy measurements to be made safely. The unit uses 3 off Ampflex™ flex type CTs (current transformers) for current measurement, and a standard wall socket plug for voltage measurement and power supply. Set up and download of the **SPCPro** is via a USB connection to any PC running Windows XP or later software, and all survey data and user settings are securely saved in non-volatile 'flash' memory.

The instrument uses a sophisticated auto-ranging measurement technique which ensures that excellent accuracy is maintained from 1 amp to 2000 amps without the need for any user-setting of range, or swapping of CTs. It has been developed with ease-of-use as a No 1 priority and is therefore simple to set up, connect and download, assuring even non-technical or inexperienced users of correct results from day one.

## DESCRIPTION

The **SPCPro** is a professional-grade instrument for the measurement and logging of three-phase and single phase electrical loads. It is able to measure the following parameters:

Voltage amplitude x 1

Current amplitude x 3

Current phase angle\* x 3

\*Referenced to the measured voltage

From the above data, the following parameters are presented via the instrument's dedicated software package 'PowerPackPro'.


Voltage (1 phase)  
Current (3 phases)  
Power Factor (3 phase average)  
kW (active power (3 phase total))  
kWh (active energy) (3 phase total)

The unit is fully self-contained and is supplied with a set of permanently connected Ampflex<sup>TM</sup> flex-type CTs, plus voltage connection and PC connection (USB) cables. The rechargeable battery provides on-board power for surveys of up to 2 weeks duration where mains power is not available.

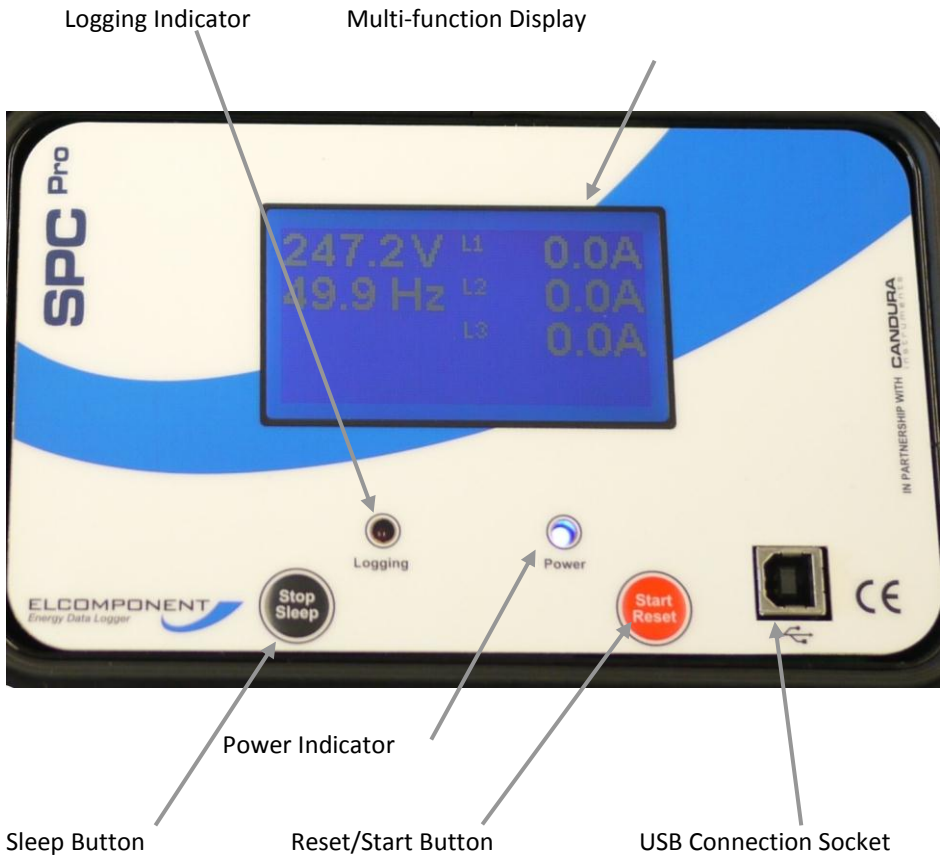
## SET UP & USE

The **SPCPro** uses a rechargeable internal battery to provide power for surveys where a mains voltage is not available, and to provide back-up power in the event of a mains failure during a normal survey. The battery will charge whenever the unit is connected to a mains supply, but a faster charge rate is achieved with the unit switched off. It is strongly recommended that the battery is charged for a minimum of 12 hours prior to commencing a survey. Battery condition may be checked via the software interface.

The unit requires little or no set up prior to commencing a survey, as the only user-definable variable is the survey storage period/survey length. This is set via the PC software. Once the storage rate has been set, it is not necessary to repeat the procedure for future surveys unless the rate is changed.

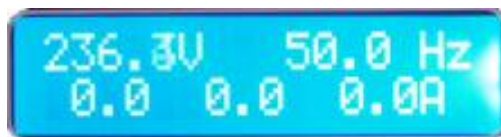
 **Note:** If the instrument does not power up as expected, or does not communicate correctly with the PC, a GENERAL RESET may be carried out by pressing and holding both buttons simultaneously for 3 seconds. The unit will reboot when the buttons are released.

## THE FRONT PANEL



### Display:

On start-up the display shows the logger status, followed by measurement values for current and voltage.



### Sleep Button:

The 'sleep' button will switch the unit into standby mode. If the unit is recording when the button is pressed, the display will warn that the survey will terminate, and provide a 5 second countdown to avoid unintended operation.

### **Reset/Start Button:**

Pressing the 'Reset/Start' button initiates a 5 second countdown prior to commencing logging.

 **Note:** any data stored in logger memory is erased when as new survey is started.

### **Power Indicators:**

The blue 'power' indicator will illuminate when the unit is connected to a valid supply voltage (175-300 VAC). When the led is 'off' the **SPCPro** is operating from battery power.

### **Logging Indication:**

The red 'logging' indicator provides a short flash every few seconds whilst a survey is taking place.

### **USB Connection Socket:**

The **SPCPro** is connected to a PC from this port using a standard USB 'A to B' interface cable (supplied).

## **SETTING UP**

Refer to the 'PowerPackPro' section of this manual for detailed instructions on setting up the **SPCPro** prior to commencing operation.

## CONNECTING UP

### Voltage Connection:


The **SPCPro** is supplied with its flex CTs already connected, which means the only physical connection to be made to the instrument is the mains supply. This should be carried out via the supplied lead to a 230VAC wall socket. If a wall socket of the correct type is not available refer to Elcomponent for availability of alternative connection cables.

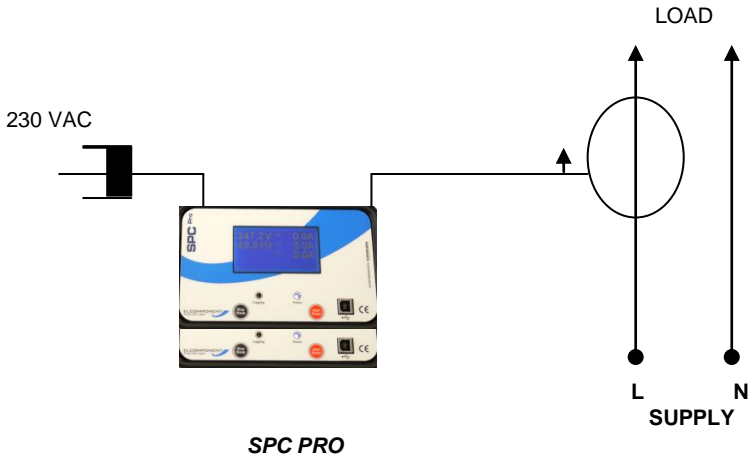


**Warning:** The connected voltage must not exceed 300VAC. Exceeding the voltage will damage the instrument and could be hazardous.

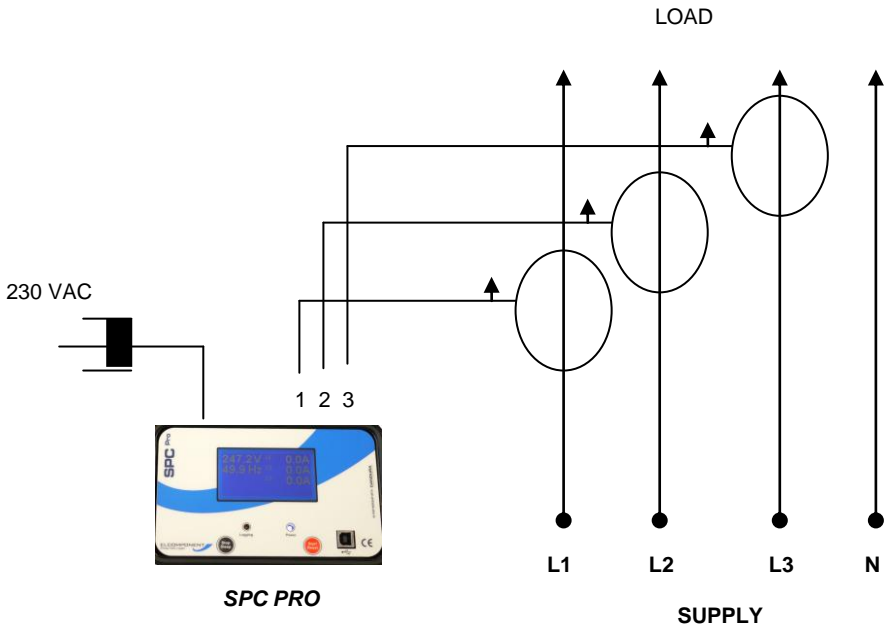
### Current Connection:

The **SPCPro** is suitable for use on both single phase and three phase supplies. Current measurement connections are made by clipping the flex-type CTs around the conductors as shown in the following diagrams and pictures.

 **NOTE:** It is important to be able to identify cables correctly when carrying out electrical surveys. Failure to do so may compromise the accuracy of results obtained. Please refer to Appendix 2 for information on UK wiring connections. If you are working outside the UK, additional information may be required.





### SINGLE PHASE CONNECTION




### THREE PHASE CONNECTION



 **NOTE:** It is essential to orientate the CTs with the arrow pointing towards the load as shown.

 **NOTE:** It is essential that the phase cables are correctly identified when connecting the flex CTs. (See Appendix 2 for more information on phase identification).

 **NOTE:** It is not necessary to have a wall socket voltage connection available to carry out a survey. The **SPCPro** will continue to operate on battery power for up to two weeks on a fully charged battery. In this case, power and energy values are based on user-defined references.

## **STARTING A SURVEY**

Once the unit is connected, logging is initiated by pressing and holding the 'Start/Reset' button for 5 seconds. Note that the display will 'count down' to the survey start. Logging is confirmed by the red 'logging' led flashing every few seconds.

## **ENDING A SURVEY**

A survey may be ended manually by pressing & holding the 'sleep' button.

Surveys will end automatically if the programmed survey duration is reached, or if the power is removed and the battery life exceeded.

In all cases the recorded data will be securely saved for download.

## DOWNLOADING A SURVEY

Please refer to sub-heading “Connecting the **SPC Pro**” in the following section for details on data download and presentation.

### USING THE SOFTWARE

## OVERVIEW


The **SPCPro** ships complete with a dedicated PC utility program which provides communication, set up and data presentation capabilities. PowerPackPro is designed to run on Windows XP and later platforms.

PowerPackPro is a task-orientated program and is extremely easy to drive, even for new users. It provides the following functionality for the **SPCPro**

- Logger Set Up
- Logger Status Check
- Logger Download
- Data Configuration
- Multiple Trace ‘Zoom’ Graphing
- Carbon Footprint Calculation
- Multi-rate Tariff costing
- Alarm Reporting
- Statistical Analysis
- Summary Reporting
- Data Export to MS Office

## LOADING THE SOFTWARE


To load PowerPackPro, install the CD and follow the on-screen instructions.

 **NOTE:** PowerPackPro is available for free download at [www.spcloggers.com](http://www.spcloggers.com) However to avoid potential driver problems it is important to load the software on the CD supplied with the unit, even if a downloaded copy has already been installed.

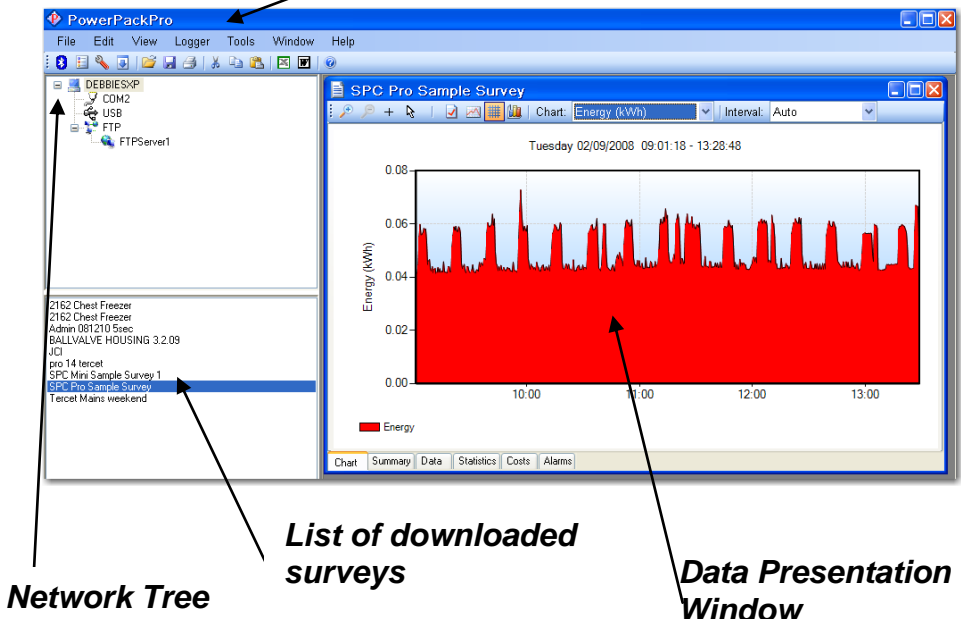
Future software updates may then be downloaded from the website and installed as normal.

## OPERATION

### Getting Started:

Open the software by clicking the  desktop icon and double click 'SPCPro Sample Survey' to show the following screen.

### Main Toolbar




The software ships with some sample data pre-loaded which can be used for familiarisation of the package, and is used in the examples in the 'Using The Graphing Package' section.

## CONNECTING THE *SPCPro*

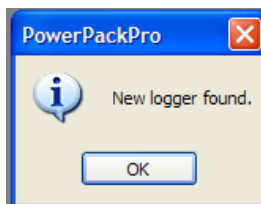
Connect the *SPCPro* to the PC using an A to B type USB cable, and an unused USB port on the PC.


 **NOTE:** Ensure that the CD supplied is present in the CD drive when the *SPCPro* is first connected.

The PC will automatically recognise the *SPCPro* (indicated by the "Found New Hardware" message) and will install the necessary drivers to allow communications to be established.

 **NOTE:** the drivers are included on the CD supplied with the unit. This must be present in the CD drive at this stage in the proceedings.

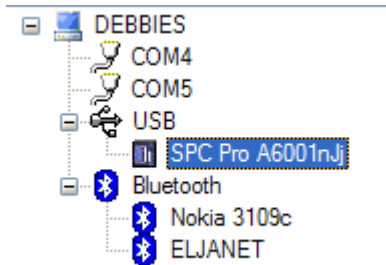
The successful completion of the process is indicated by a "Your hardware is installed and ready to use" message appearing. Within a few seconds PowerPackPro will locate the *SPCPro* and generate a new message.



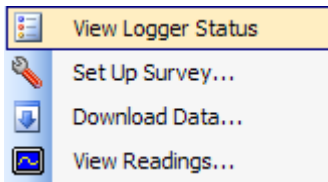
 **NOTE:** If the Windows device recognition/drivers load process fails to function it may be necessary to load the

drivers manually. See Appendix 1 for details on this procedure.


Click OK and the logger will appear on the tree at the upper right of the screen as shown.

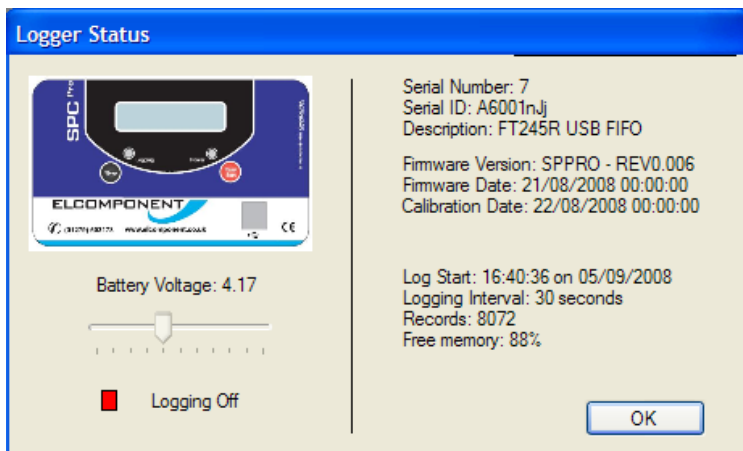


Right click the **SPC** icon to open the command menu




This provides four options:

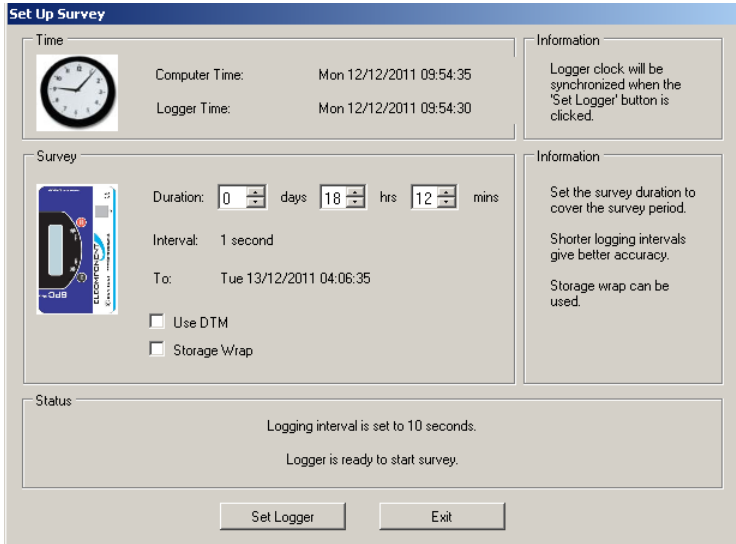
‘View Logger Status’ (also available via the  icon).



Battery voltage should read over 3.7 volts. If it is lower than this the logger may shutdown if it is not connected to a mains supply.


Details of the device and any recorded data are shown, along with the logging status indicator. Green for 'on' and red for 'off'.

'Set Up Survey' (also available via the  icon.



**Set Up Survey**


**Time**

 Computer Time: Mon 12/12/2011 09:54:35  
Logger Time: Mon 12/12/2011 09:54:30

**Information**

Logger clock will be synchronized when the 'Set Logger' button is clicked.

**Survey**

 Duration: 0 days 18 hrs 12 mins  
Interval: 1 second  
To: Tue 13/12/2011 04:06:35

Use DTM  
 Storage Wrap

**Information**

Set the survey duration to cover the survey period.  
Shorter logging intervals give better accuracy.  
Storage wrap can be used.


**Status**

Logging interval is set to 10 seconds.  
Logger is ready to start survey.

This screen allows the following parameters to be set.

 **NOTE:** Ensure your PC clock is correct!


 **NOTE:** This will erase all survey data on the logger!

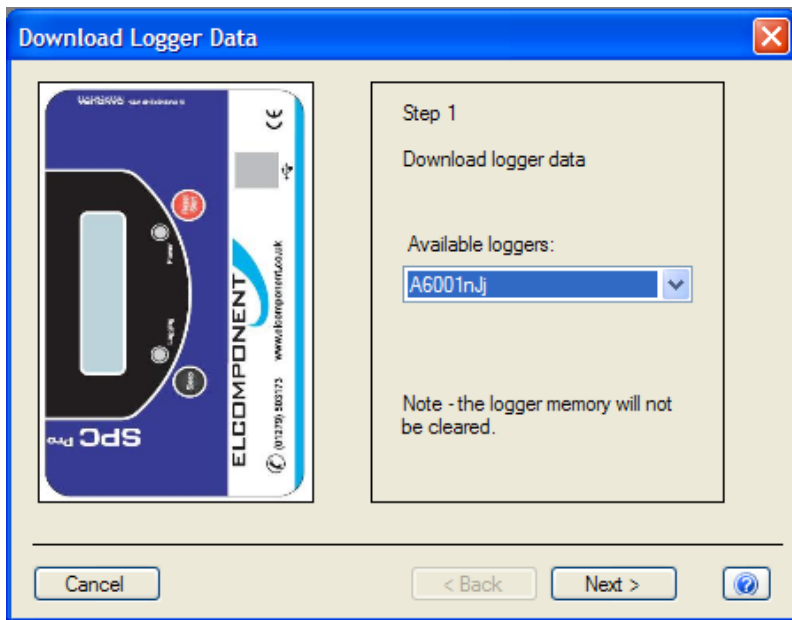
 **NOTE:** Should the unit not respond a General Reset may be required – Hold down the Reset/Sleep button together until the unit restarts.

Storage Interval – Select the desired data storage interval from the available options. Note that the “Interval” pane will alter to show the storage interval at the selected survey duration, and the end time/date of the proposed survey, based on the current time.

If the “Storage Wrap” is checked, the logger will record continuously on a ‘loop’ basis until manually stopped. If this box is unchecked (default) logging will stop automatically at the end of the survey when the memory is full.

Click ‘Set Logger’ to update the unit.

‘Download Data’ (also available via the  icon).



### **Step 1**

Click ‘next’ to download the data.

 **NOTE:** This does not clear the logger memory.



## Step 2

When the download reaches 100%, click 'next' to enter the survey name, location and any relevant notes.

## Step 3 (Voltage present)

Download Logger Data

Step 3 of 4 Specify Voltage Phase

Voltage

Auto detect

Power Factors

<input type="radio"/>	Phase 1	0.99
<input type="radio"/>	Phase 2	0.91
<input type="radio"/>	Phase 3	0.88

Note: this setting may be changed later when viewing survey.

Cancel < Back Next >

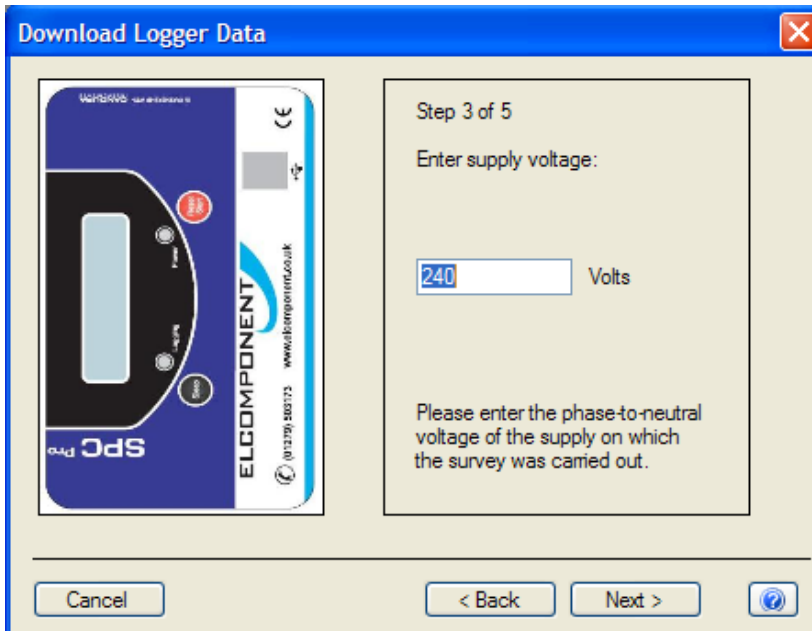
This screen shows the results of the autodetect sequence for voltage phase detection. In this example ph3 has been selected, and the resulting phase power factors shown in the lower pane.

As the survey data are downloaded, the software checks the phase angle measurements for all phases to ascertain the phase which was used for the voltage connection (usually unknown to the operator). The screen shows the selected voltage phase at the top, and the phase power factor below. In exceptional circumstances (e.g. very poor actual PF) it may be necessary to override the auto-detection. This is achieved

by unchecking the 'Auto detect' box and clicking on the desired voltage phase.

Note that the phase power factors are automatically adjusted to reflect the revised selection.

### ***Step 3 (Voltage not present only)***



Download Logger Data

Step 3 of 5

Enter supply voltage:

Volts

Please enter the phase-to-neutral voltage of the supply on which the survey was carried out.

Cancel      < Back      Next >      ?

This screen appears if the software detects that no voltage was measured consistently through the survey (e.g. battery powered survey), and manual input is required.

Enter the supply voltage as a **phase to neutral value**. If the survey was carried out on a 3 phase 3 wire system (where no neutral is present) it is necessary to enter the value from phase to earth. On standard 3ph systems the phase to neutral value may be derived from the phase to phase value by dividing it by  $\sqrt{3}$ . E.g.  $400V \div \sqrt{3} = 230V$

## Step 4 (Voltage not present only)

Download Logger Data

Step 4 of 5

Enter load type:

Type - Power Factor

Office - 0.90

Please choose the load type and power factor that correspond most closely to the supply on which the survey was carried out.

Cancel < Back Next > ?

Select a load type, or enter the power factor of the load if known.

## STEP 4/5

Select a tariff from the drop down menu for use in cost calculations.

Download Logger Data


Step 5 of 5

Select tariff:

(Default Day & Night Rate)


Further tariff data may be entered on the 'Costs' tab when viewing the survey.

Cancel < Back Next > ?

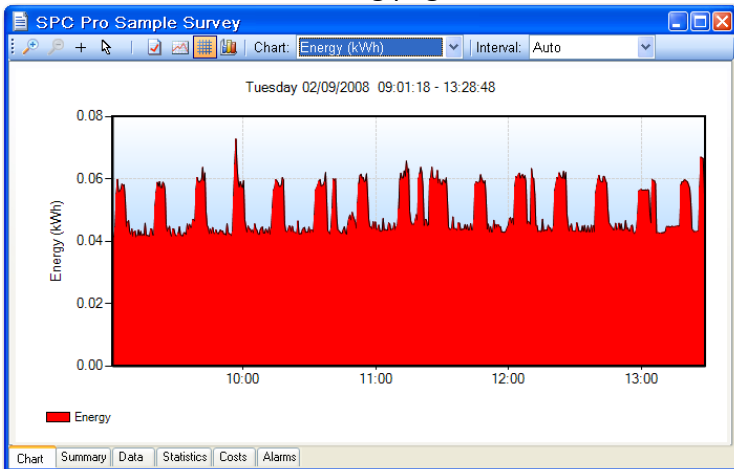
 **NOTE:** PowerPackPro is pre-loaded with default single rate and day/night tariffs. Other tariffs may be added by the user (see page 26).

Click 'finish' to open a graph showing the survey results

## USING THE GRAPHING PACKAGE

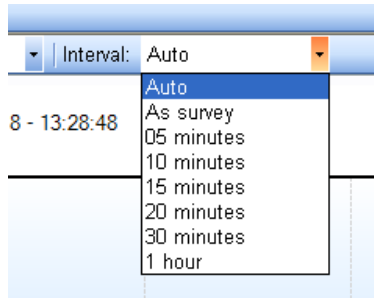
PowerPackPro will automatically open a graph after a survey has been successfully downloaded. Graphs may also be opened by clicking on the relevant survey in the survey list, or via the  icon.

Depending on the length of the downloaded survey, the default settings will create a graph of the entire survey, or in the case of longer surveys create a graph using a 30 minute data interval with an initial view of a 1 week period. These settings may be altered manually if desired. PowerPackPro is shipped with a SPCPro sample survey pre-loaded which is used in the following pages.

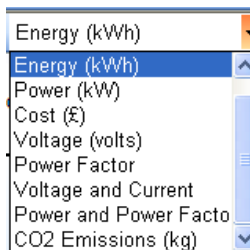


The above window shows the default view.

Select the down arrow on the graph “Interval” option to change the interval.



### Selecting the Measurement Units:



Click on the drop-down list on the toolbar to select the desired unit.


The graphing engine uses a bar chart format for kWh, cost and carbon values, and a line chart for amps, volts, kW & PF.

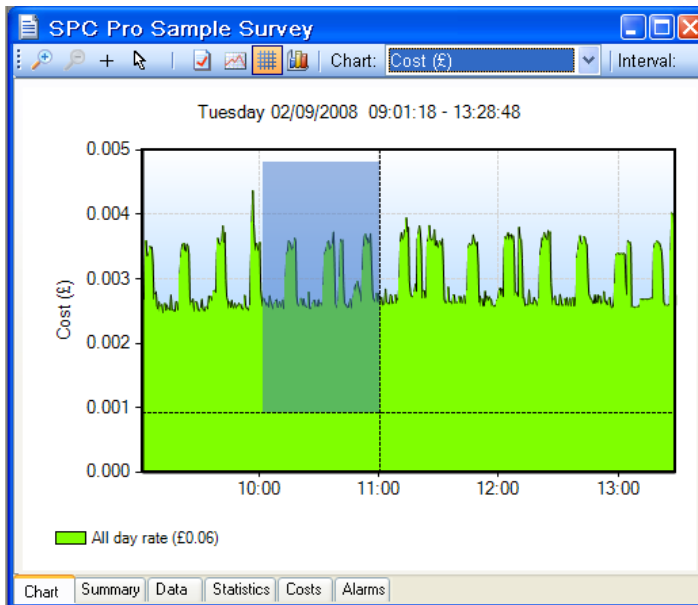
Dual trace graphs use the LH & RH Y axis to define the trace values.

## USING THE GRAPH TOOLS

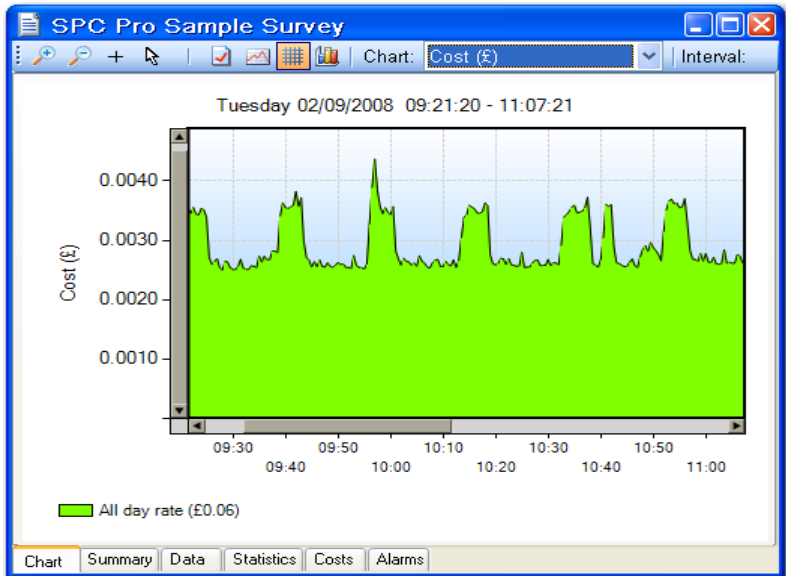
### Data View Options



#### **Zoom:**

Click the zoom tool buttons  to activate the zoom cursor. Drag the cursor over the desired graph area whilst holding down the left mouse button to define a zoom area.




Release the mouse button to display the zoom area



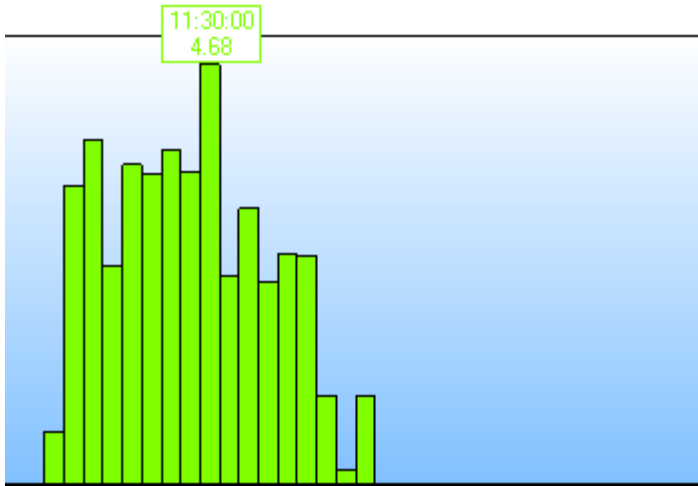
 **NOTE:** The zoom function can be repeated as many times as necessary to provide a macro zoom capability. The  button reverses the zoom-in process by one step per click.


### **Show Data Values:**

Click the  crosshairs button to enable this feature. Place the crosshairs at any point on the data trace to display the value and time stamp below the title bar.

Double click on the trace to display this information on the graph itself.

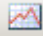
y 22/09/2004 01:24:35 - Thursday 23/09/2004 00:11:23

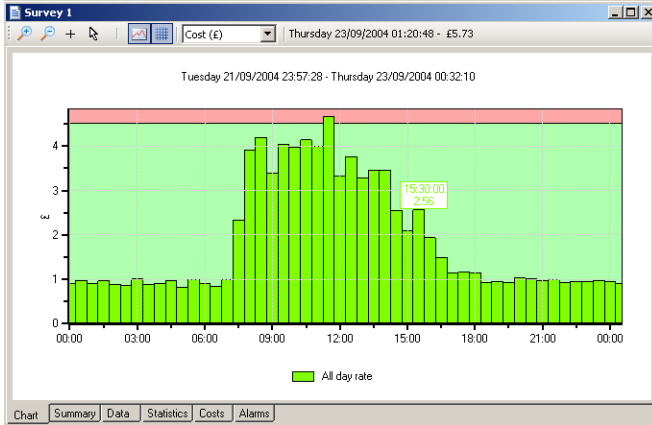


To remove data values from the graph, re-select the  cursor.




## Show Alarm Levels:

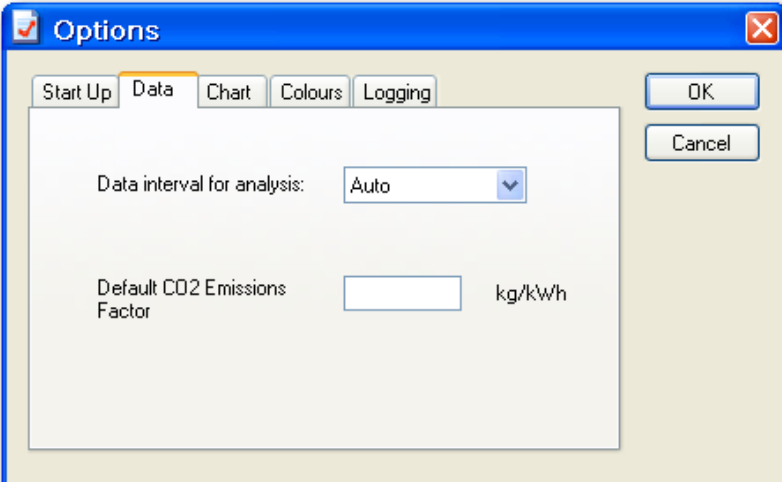
Click the  button to display the alarm values on the graph.



## Show Gridlines:

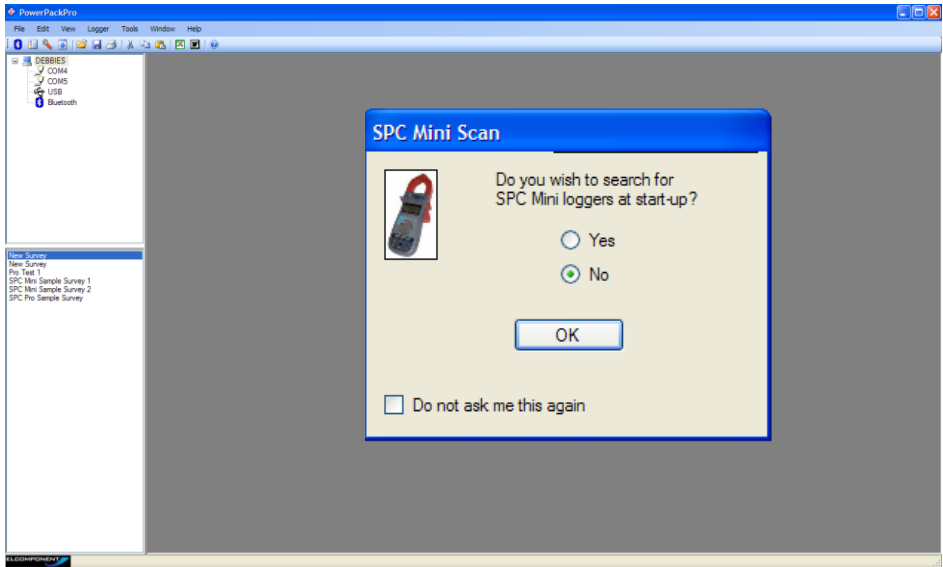
Click the  button to toggle the graph gridlines on and off.

Click the  icon to open the options screen.



The screenshot shows the 'Options' dialog box with a blue title bar and a close button. It has four tabs: 'Start Up', 'Data', 'Chart', 'Colours', and 'Logging'. The 'Data' tab is selected. The dialog contains two settings: 'Data interval for analysis:' with a dropdown menu set to 'Auto', and 'Default CO2 Emissions Factor' with an empty text box and the unit 'kg/kWh'. On the right side, there are 'OK' and 'Cancel' buttons.




# Start Up




Check “No” / “Don’t ask me this again”

## ADDITIONAL GRAPH FUNCTIONS

### Export to Microsoft Office:

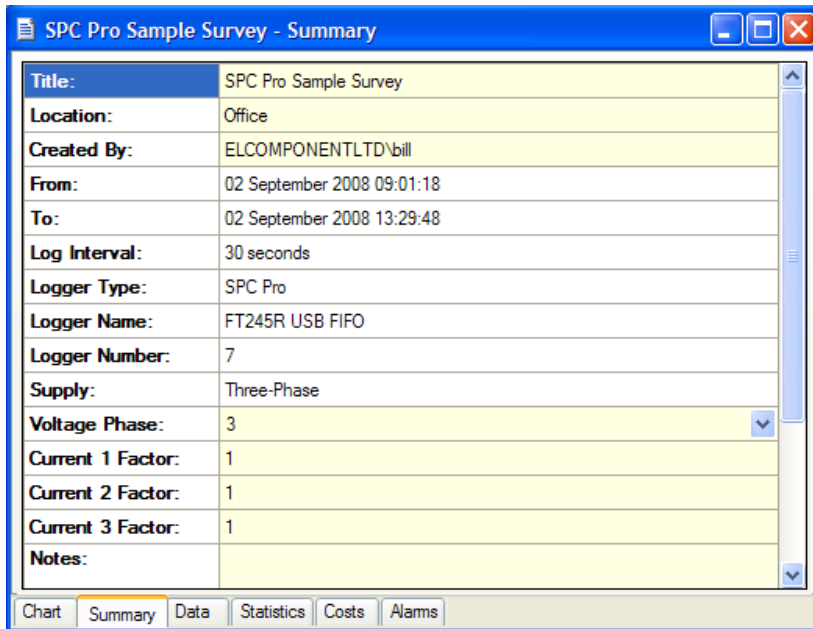
Click the  Excel or  Word buttons on the main toolbar to export the graph image to either of these programs. (This can also be done using the ‘Edit/Select All’ function on the menu bar or from the graph toolbar icon , and copy and paste buttons on the toolbar).

### Sharing Surveys

Click the  button on the main toolbar to email the survey to a third party. This will open Outlook with the files already inserted, with a reminder /weblink to the recipient that they will need to have PowerPackPro running on their PC to view the survey. These files should not be opened in Excel.

## SUMMARY TAB

Click the 'Summary' tab at the bottom of the chart window to open the survey summary page.



The screenshot shows a window titled "SPC Pro Sample Survey - Summary". The main area contains a table with the following data:

Title:	SPC Pro Sample Survey
Location:	Office
Created By:	ELCOMPONENTLTD\bill
From:	02 September 2008 09:01:18
To:	02 September 2008 13:29:48
Log Interval:	30 seconds
Logger Type:	SPC Pro
Logger Name:	FT245R USB FIFO
Logger Number:	7
Supply:	Three-Phase
Voltage Phase:	3
Current 1 Factor:	1
Current 2 Factor:	1
Current 3 Factor:	1
Notes:	


At the bottom of the window, there is a tabbed interface with the following tabs: Chart, Summary (selected), Data, Statistics, Costs, and Alarms.

The following fields may be edited as required.

- Title
- Location
- Created By
- Voltage Phase
- Current Multiplier
- Notes
- Voltage\*
- Power Factor\*


\*When present (only shown for "voltage not present" surveys)

The 'Current Multiplier' allows adjustments to be made to the measured current values to allow for additional external CTs.

 **NOTE:** changes are indicated by the text changing from black to red. The option to 'save changes' appears when existing from the summary page. Click 'yes' to save changes.

## **DATA TAB**

Click the 'data' tab to display the survey data in tabular format.




 **NOTE:** The data displayed will match the graph settings for analysis data interval (see options) and graph period selected.

### **Selecting Data:**

Hold down the left mouse button and drag the cursor to select data. To select the whole table click "Edit/Select All" button on the main menu bar.

Selected data may be copied and pasted as required using the relevant buttons on the main toolbar.

### **Exporting Data:**

Data may be exported in tabular form to Excel or Word by clicking the relevant buttons   on the main toolbar or emailed to a third party by clicking the  button.

# STATISTICS TAB

Item:	Current1 (amps)	Current2 (amps)	Current3 (amps)	Power Factor	Voltage (volts)	Energy (kWh)	Power (kW)	Cost (£)	CO2 (kg)
From:	02/09/2008 09:01:18								
To:	02/09/2008 13:29:48								
Duration:	4 hours 28 minutes 30 seconds								
Interval:	30 seconds								
Data Points:	544								
Mean Value:	11.9	4.3	10.6	0.93	238.3	0.06	5.9	0.00	0
Median Value:	13.8	8.4	11.4	0.91	237.9	0.06	6.8	0.01	0
Maximum Value:	17.5	14.8	13.3	0.96	240.1	0.07	8.7	0.01	0
Time of Maximum:	02/09/2008 09:42:18	02/09/2008 13:27:18	02/09/2008 09:22:48	02/09/2008 11:25:48	02/09/2008 09:38:48	02/09/2008 09:57:18	02/09/2008 09:57:18	02/09/2008 09:57:18	02/09/2008 09:57:18
Minimum Value:	10.1	2.0	9.5	0.85	235.8	0.04	5.0	0.00	0
Time of Minimum:	02/09/2008 13:07:18	02/09/2008 09:32:18	02/09/2008 11:26:18	02/09/2008 09:41:18	02/09/2008 13:03:48	02/09/2008 09:12:18	02/09/2008 09:12:18	02/09/2008 09:12:18	02/09/2008 09:12:18
Mean to Peak Ratio:	0.7	0.3	0.8	0.96	1.0	0.70	0.7	0.70	0
Standard Deviation:	0.1	0.1	0.1	0.00	0.0	0.00	0.0	0.00	0
Overall Value:	11.9	4.3	10.6	0.93	10.6	28.23	5.9	2.70	12

Click the 'Statistics' tab to display the stats window showing the key values and ratios for all parameters.

## COSTS TAB:

Click the 'costs' tab to display the costing window.

PowerPackPro is supplied with two preloaded tariffs (Default Single Rate and Default Day & Night Rate). These are provided as examples and do not necessarily reflect actual tariffs.

Survey 1 - Costs						
Tariff: [Default Single Rate]						
	Description	From	To	Cost Rate (p/kWh)	Energy (kWh)	Cost (£)
1	All day rate	00:00	00:00	10.000	5438.3	543.83
2						
3						
4						
5						
<b>Total</b>				10.000	5438.3	543.83

## ADDING AND AMENDING TARIFFS:

PowerPackPro supports the entry of multiple tariffs with up to 5 time bands.

**NOTE:** Time bands cannot span a date change. If a desired time band runs across midnight it must be entered as two bands.

To amend an existing tariff, overtype the description field as required and enter the desired cost rates also. Note that costs are entered as p/kWh. Select the desired start/finish times from the drop-down menu.

Amended values will change from black to red. Click the 'recalculate' button to apply the revised rates to the survey data.

To create a new tariff, proceed as above, adding additional bands if required.

The option to save changes appears when exiting from the costs page. Click 'Yes' to save changes. Enter a new tariff name in the 'Save Tariff As' box to create a new tariff, or save as the existing name to amend a tariff.

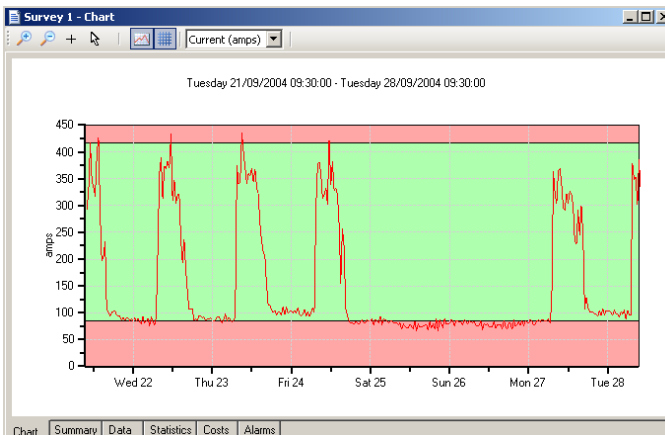
## ALARMS TAB

Click the 'Alarms tab to display the alarm screen.

Date	Cost (£)	Energy (kWh)	Power (kW)	Power Factor	Current 1 (amps)	Current 2 (amps)	Current 3 (amps)	Voltage (volts)	CO2 (kg)
Tue 02/09/2008 09:01:18	0.00	0.0	5.0	0.94	10.4	2.1	9.7	239.0	0.0
Tue 02/09/2008 09:01:48	0.00	0.0	5.0	0.94	10.4	2.0	9.7	239.2	0.0
Tue 02/09/2008 09:02:18	0.00	0.0	5.0	0.94	10.4	2.0	9.8	239.1	0.0
Tue 02/09/2008 09:10:48	0.00	0.0	5.0	0.94	10.5	2.0	9.8	238.5	0.0
Tue 02/09/2008 09:12:18	0.00	0.0	5.0	0.94	10.4	2.0	9.8	238.2	0.0
Tue 02/09/2008 09:12:48	0.00	0.0	5.0	0.94	10.5	2.2	9.8	238.0	0.0
Tue 02/09/2008 09:18:18	0.00	0.0	5.0	0.94	10.5	2.0	9.7	238.6	0.0
Tue 02/09/2008 09:20:18	0.00	0.0	5.0	0.94	10.5	2.1	9.7	238.7	0.0
Tue 02/09/2008 09:28:18	0.00	0.0	5.0	0.94	10.5	2.0	9.8	239.3	0.0
Tue 02/09/2008 09:30:18	0.00	0.0	5.0	0.94	10.5	2.0	9.8	239.6	0.0
Tue 02/09/2008 09:30:48	0.00	0.0	5.0	0.94	10.5	2.0	9.8	239.6	0.0
Tue 02/09/2008 09:32:48	0.00	0.0	5.0	0.94	10.5	2.0	9.7	239.2	0.0
Tue 02/09/2008 09:33:18	0.00	0.0	5.0	0.94	10.5	2.0	9.7	239.2	0.0
Tue 02/09/2008 09:42:18	0.01	0.1	7.6	0.86	17.5	5.4	13.2	239.7	0.0
Tue 02/09/2008 10:12:48	0.00	0.0	5.1	0.95	10.5	2.3	9.7	239.7	0.0
Tue 02/09/2008 10:23:18	0.00	0.0	5.2	0.95	10.5	2.6	9.8	239.8	0.0
Tue 02/09/2008 10:23:48	0.00	0.0	5.2	0.95	10.5	2.6	9.8	239.5	0.0
Tue 02/09/2008 10:25:48	0.00	0.0	5.1	0.94	10.5	2.4	9.7	239.3	0.0
Tue 02/09/2008 10:26:18	0.00	0.0	5.1	0.94	10.5	2.4	9.8	239.5	0.0
Tue 02/09/2008 10:26:48	0.00	0.0	5.1	0.94	10.5	2.4	9.8	239.3	0.0
Tue 02/09/2008 10:29:48	0.00	0.0	5.2	0.95	10.5	2.6	9.7	239.1	0.0
Tue 02/09/2008 10:41:48	0.01	0.1	7.1	0.96	10.4	11.0	9.7	238.9	0.0
Tue 02/09/2008 10:42:18	0.01	0.1	7.2	0.96	10.5	11.2	9.6	238.9	0.0

Select the desired parameter from the drop-down menu at top left. Enable high and low alarms via the checkboxes provided. Enter your desired alarm thresholds as required and press the 'enter' key to activate. The alarm events will be listed in the main window.

**NOTE:** Alarm thresholds may also be viewed on the chart, with the alarm zones appearing in pink

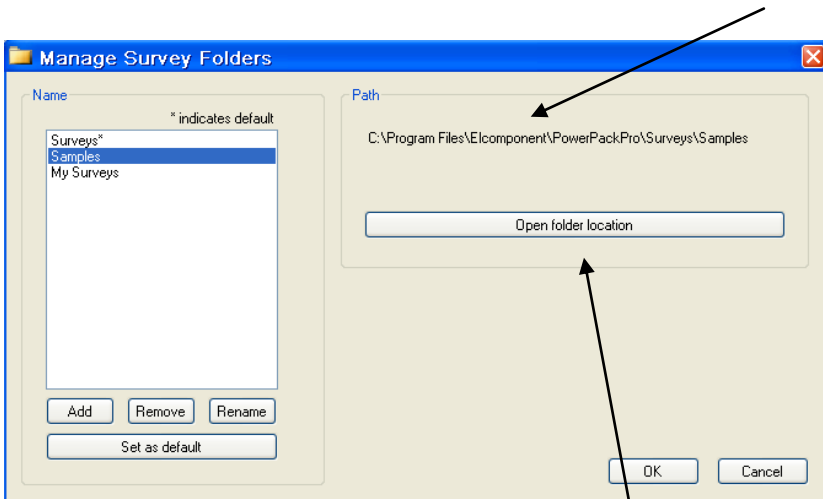


File Structure:

To establish the file location of surveys on your PC select the browser on the file tree



This will give a window that tells you where the files are located:



If you wish to open the folder location press the bar

New Folders may also be created by pressing the “Add” button



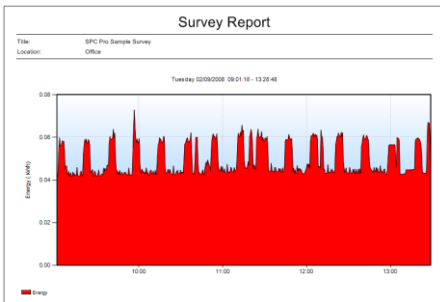
This option also enables you to remove folders and rename them.



# REPORT FACILITY

In addition to the export functions for creating reports PowerPackPro provides a quick report summary.

Select “File/Print Report” and change paper orientation to landscape. This will provide a 4 page report displaying the currently displayed graph, survey summary, survey statistics and costings. This method can be used to save the report as a PDF file.



**Summary**

Title: SPC Pro Sample Survey  
Location: Office  
Created by: ELCOMPONENT1,TDJ&R  
From: 02/09/2008 09:00:45  
To: 02/09/2008 13:29:19  
Log Interval: 30 secs  
Logger Type: SPC Pro  
Logger Name: SPC Pro A200 Test  
Logger Number: 7  
Supply: Three-Phase  
Voltage Phase: 3  
Notes:

**Statistics**

From: 02/09/2008 09:00:48  
To: 02/09/2008 13:29:18  
Duration: 4 hours 28 minutes 30 seconds  
Interval: 30 seconds  
Data Points: 817

Item	Current1 (amps)	Current2 (amps)	Current3 (amps)	Power Factor
Mean Value:	11.92	4.23	10.64	0.94
Median Value:	13.82	8.38	11.38	0.93
Maximum Value:	17.90	14.80	13.25	0.98
Time of Maximum:	02/09/2008 09:42:18	02/09/2008 13:27:18	02/09/2008 09:22:48	02/09/2008 13:28:18
Minimum Value:	10.10	1.95	9.80	0.88
Time of Minimum:	02/09/2008 13:07:18	02/09/2008 09:32:18	02/09/2008 11:26:18	02/09/2008 13:18:18
Mean to Peak Ratio:	0.68	0.29	0.80	0.96
Standard Deviation:	0.87	0.11	0.06	0.00
Overall Value:	11.92	4.23	10.64	0.94

**Costs**

Tariff (Default Day & Night Rates)

Description	From	To	Cost Rate (p/kWh)	Energy (kWh)	Cost (£)	
1 Night rate	00:00	07:00	3.00	0.0	0.00	
2 Day rate	07:00	00:00	11.00	26.5	2.91	
<b>Total</b>				11.00	26.5	2.91

## **APPENDIX 1**

### **LOADING THE SPC DRIVERS**

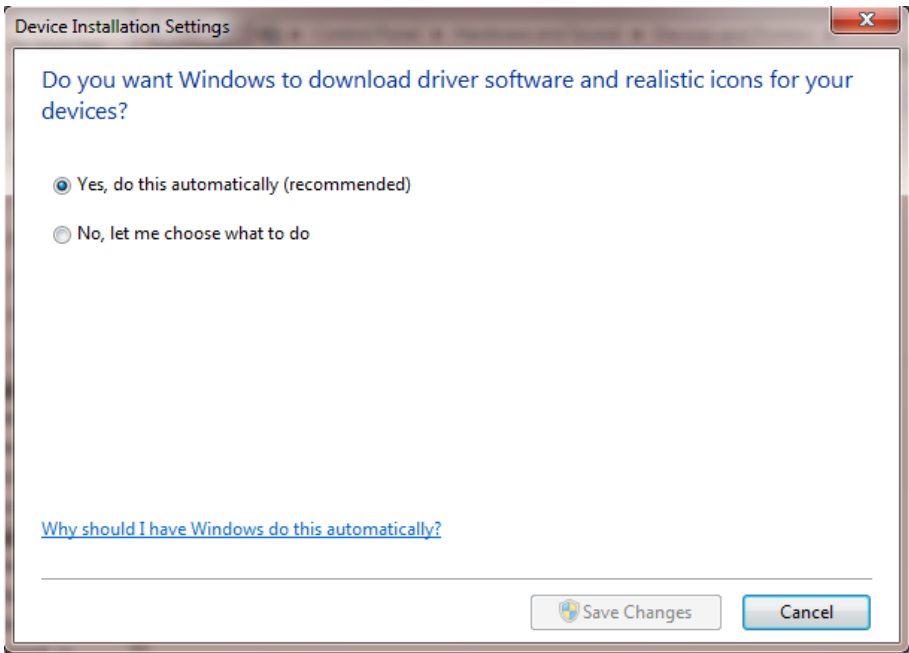
All SPC devices link to the PC via a USB connection. This provides fast reliable communications, and requires no additional configuration by the user. However, in most cases the PC must load the necessary driver files before it will recognise the SPC connected to it. Almost all communication problems can be traced to missing or incorrect drivers.

Normally the load process is automatic, but depending on PC settings, web connection and Windows platform, there may be occasions when drivers do not load as they should. In this situation some manual intervention may be necessary. In the event that the PC does not recognise an SPC device, please proceed as detailed below.

#### **Windows 7:**

Windows 7 is designed to obtain any driver files that it needs from the web via the 'windows update' function. If the PC has a web connection, and this behaviour has not been disabled, driver file installation is automatic and seamless.

To check if automatic driver loading is enabled, click the start button and select 'devices and printers'. One of the available devices is the PC itself. Right click on the PC icon and select 'Device Installation Settings'. Ensure the 'automatic' option is selected and reconnect your SPC device to a spare USB port. If the PC is connected to the web, the drivers will now load.



If no web connection is available the drivers can be loaded manually as follows:

*Ensure that your SPC Device is connected to the PC*

*Ensure the CD minidisk supplied with your SPC device is installed in the CD drive on your PC.*

*Click the start button and select Control Panel. Click 'Device Manager'. (You may need to select 'large icons' from the 'viewing' menu at the top right of the page).*

*From the Device Manager list, select 'Other Devices'. Note: There will be a yellow warning triangle showing, which may be identified as 'SPC xxx'. Click on the yellow triangle, and click 'Update Driver'*

*Select the option which allows the driver to be installed from a location on the PC (not the automatic search).*

*Browse to the CD location [DRIVE]:\V.\*.\*\*.\*\SPC---Drivers\ and click 'next'.*

*Click install, and exit when complete. Note: It may be necessary to load a second driver for the COM port. If the Device Manager list shows a second yellow triangle, click on this and repeat the above procedure*

## Windows Vista:

Windows Vista is designed to obtain any driver files that it needs from the web via the 'windows update' function. If the PC has a web connection, and this behaviour has not been disabled, driver file installation is automatic and seamless.

To check if automatic drivers loading is enabled click the start button and select 'control panel' and click the 'system' icon (you may need to select 'classic view' from the sidebar)

Select 'advanced system settings' from the sidebar and click the hardware tab and select 'Windows Update Driver Settings' to display the following screen



Ensure that 'Check for drivers automatically' is selected and reconnect your SPC device to a spare USB port. If the PC is connected to the web, the drivers will now load.

If no web connection is available the drivers can be loaded manually as follows:

*Ensure that your SPC Device is connected to the PC*

*Ensure the CD Minidisk supplied with your SPC device is installed in the CD drive of your PC*

*Click the start button and select control panel and click the device manager icon (you may need to select classic view from the side bar)*

*From the Device Manager list, select 'Other Devices'. Note: There will be a yellow warning triangle showing, which may be identified as 'SPC Pro'.*

*Click on the yellow triangle, and click 'Update Driver'*

*Select the option which allows the driver to be installed from a location on the PC (not the automatic search).*

*Browse to the CD location [DRIVE]:\V.\*.\*\*.\*\SPC---Drivers\ and click 'next'.*

*Click install, and exit when complete. Note: It may be necessary to load a second driver for the COM port. If the Device Manager list shows a second yellow triangle, click on this and repeat the above procedure*

## **Windows XP:**

The later versions of Windows XP Pro (Service Packs 2 & 3) are designed to obtain any driver files that are needed from the web via the 'windows update' function. If the PC has a web connection, and this behaviour has not been disabled, driver file installation is automatic and seamless.

To check if automatic drivers loading is enabled click the start button and select 'control panel' and click the 'system' icon. Select the hardware tab and click the 'Windows Update' button to display the following screen



Select either of the first two options to enable Windows Update reconnect your SPC device to a spare USB port. If the PC is connected to the web, the drivers will now load.

If the above option is not present, proceed as follows:

*Ensure that your SPC Device is connected to the PC*

*Ensure the CD Minidisk supplied with your SPC device is installed in the CD drive of your PC*

*Open "Control Panel" from the Windows 'Start' button.*

*In XP, select 'System' and click the 'Hardware' tab, and then 'Device Manager'.*

*From the Device Manager list, select 'Other Devices'. Note: There will be a yellow warning triangle showing, which may be identified as 'SPC Pro'. Click on the yellow triangle, and click 'Update Driver'*

*Select the option which allows the driver to be installed from a location on the PC (not the automatic search).*

*Browse to the CD location [DRIVE]:\V.\*.\*\*.\*\*\SPC---Drivers\ and click 'next'.*

*Click install, and exit when complete. Note: It may be necessary to load a second driver for the COM port. If the Device Manager list shows a second yellow triangle, click on this and repeat the above procedure.*

## APPENDIX 2

### EUROPEAN SETTINGS

PowerPack Pro should be set for English Regional and Language Settings . Instructions for carrying this out follows below:

#### WINDOWS 7

Select Control Panel and “Clock, Language, and Region”



**Clock, Language, and Region**  
Change keyboards or other input methods

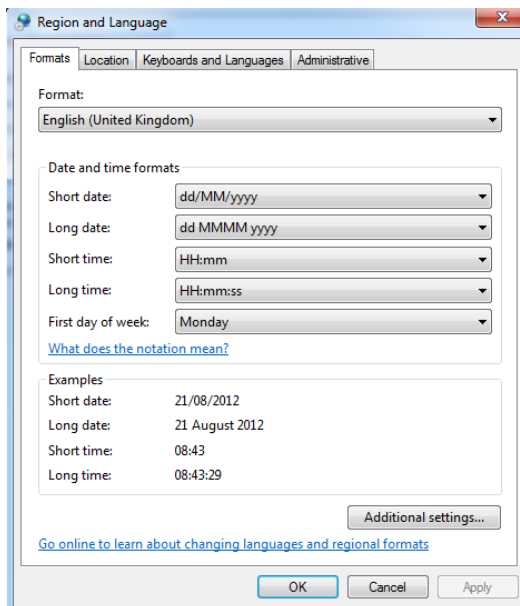
*Selection Region & Language / Change the date, time or number format*



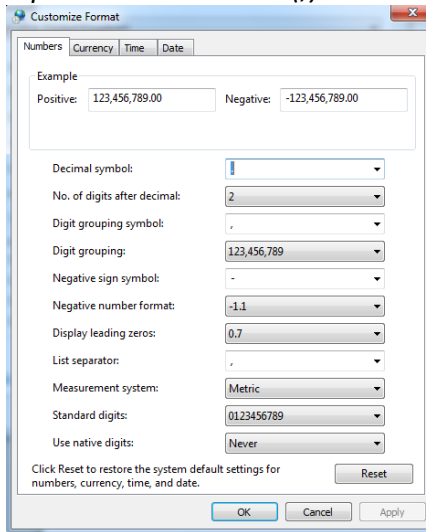
**Region and Language**

Change location | Change the date, time, or number format | Change keyboards or other input methods

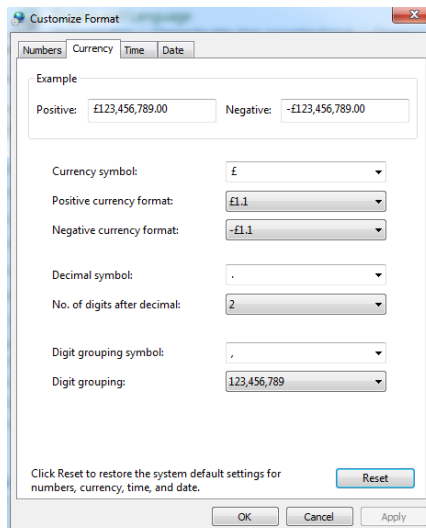
*Format should be English (United Kingdom) and set as below  
dd/MM/yyyy*



Select “Additional Settings”. Ensure that the Decimal symbol is a full stop (.) this can simply be overwritten in the box below. Secondly, ensure that the list separator is a comma (,).

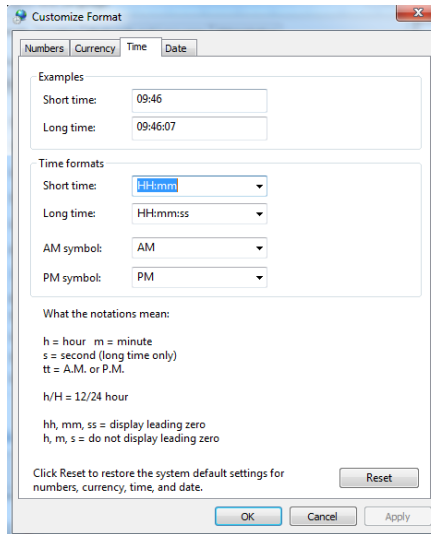


Select “Currency”. Ensure that the Decimal symbol is a full stop (.) this can simply be overwritten in the box below. Secondly, ensure that the list separator is a comma (,). At the present time PowerPackPro displays in £ only.

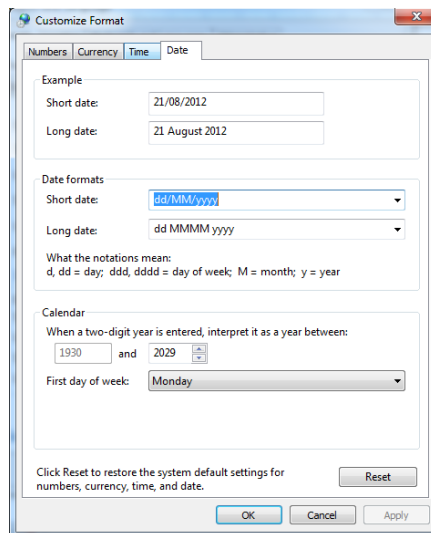




Next, select "Time". Ensure time format is HH:mm:ss



Finally, select "Date". Ensure that date settings are dd/MM/yyyy

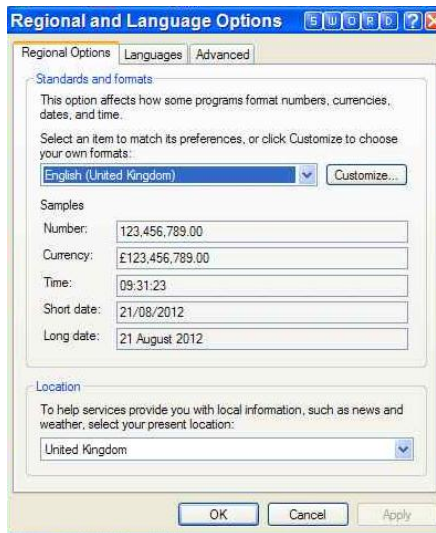


# WINDOWS XP

Select Control Panel and “Regional & Language Options”

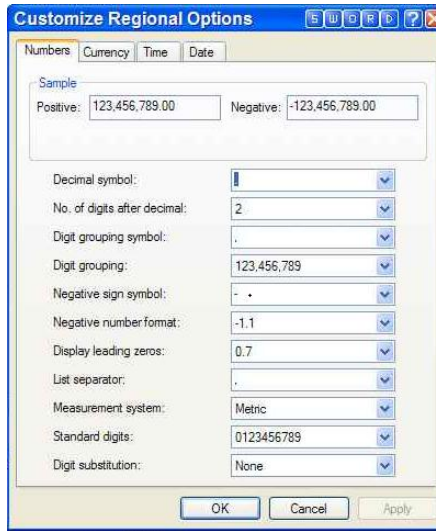


*Regional Options Format should be English (United Kingdom)*

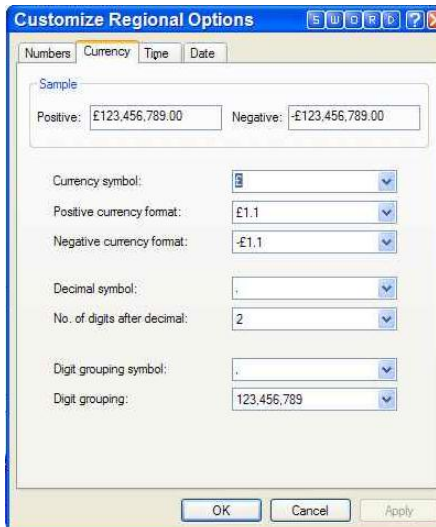


Select “Customize”/Numbers

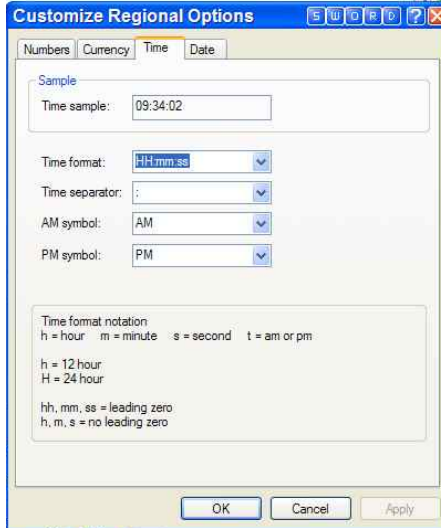
*Ensure that the Decimal symbol is a full stop (.) this can simply be overwritten in the box below. Secondly, ensure that the list separator is a comma (,).*



*Select “Currency”. Ensure that the Decimal symbol is a full stop (.) this can simply be overwritten in the box below. Secondly, ensure that the list separator is a comma (,). At the present time PowerPackPro displays in £ only.*



Next, select “Time”. Ensure time format is HH:mm:ss

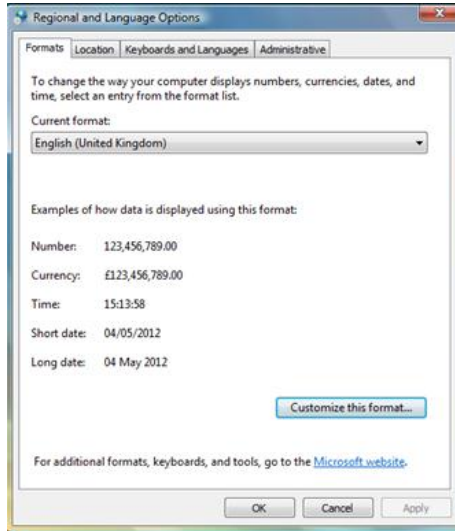


Finally, select “Date”. Ensure that date settings are dd/MM/yyyy

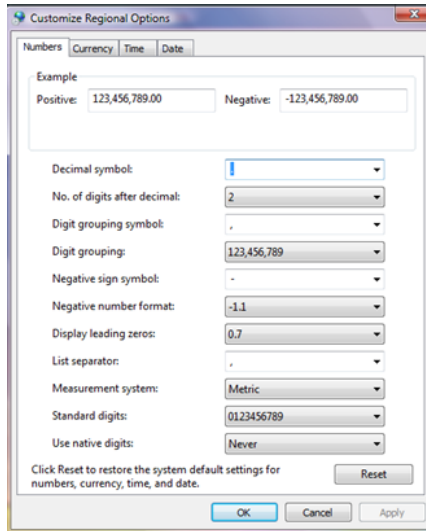


# WINDOWS VISTA

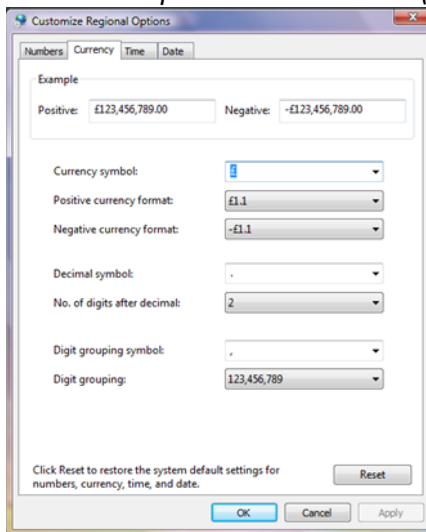
Select Control Panel and “Region & Language”. Under “Formats” tab select English (United Kingdom)



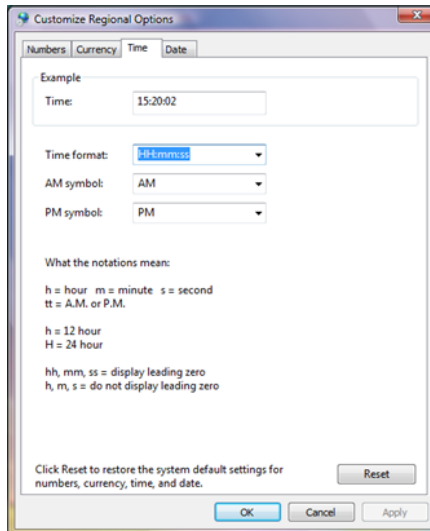
Select “Customize this format” / Numbers. *Ensure that the Decimal symbol is a full stop (.)* Secondly, *ensure that the list separator is a comma (,).*



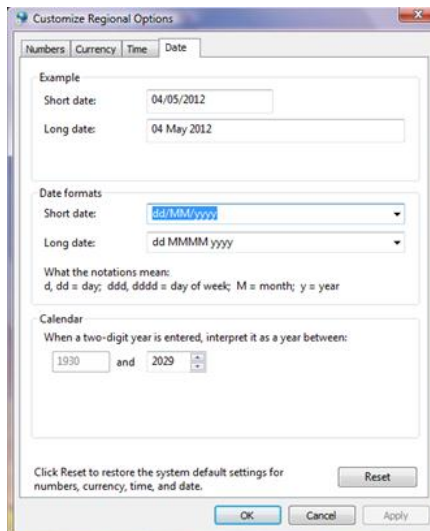
Next, select “Currency”. *Ensure that the Decimal symbol is a full stop (.)* Secondly, *ensure that the list separator is a comma (,).*



Next, select "Time". Ensure time format is HH:mm:ss



Finally, select "Date". Ensure that date settings are dd/MM/yyyy



## APPENDIX 3

### WIRING COLOURS

#### Installations prior to 2005/06

#### MAKING SINGLE PHASE MEASUREMENTS:



Live



Neutral



Earth

#### Installations after 2005/06



Live



Neutral

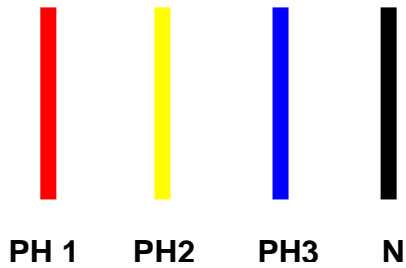


Earth



**MAKING 3 PHASE MEASUREMENTS:**

**Installations prior to 2005/06**



**Installations after to 2005/06**

